

# Technical Furniture



## **COLOR SELECTIONS**

**KEWAUNEE<sup>®</sup>**  
Technical Furniture Group

*...the power of ingenuity*



**No. 62 Driftwood**



**No. 89 Midori**



**No. 88 Malt**



**No. 90 Amazon**



**No. 61 Light Neutral**



**No. 91 Sage**



**No. 20 Sand Tan**



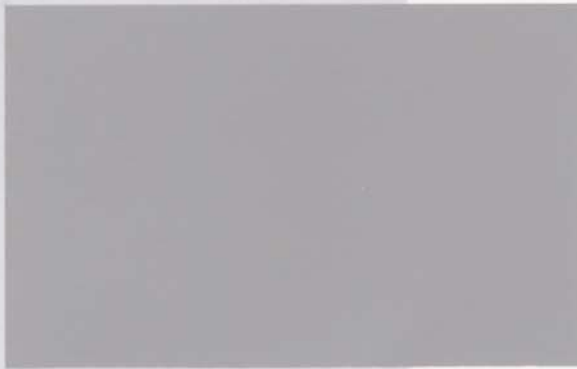
**No. 92 Butter Silk**



**No. 12 Black**



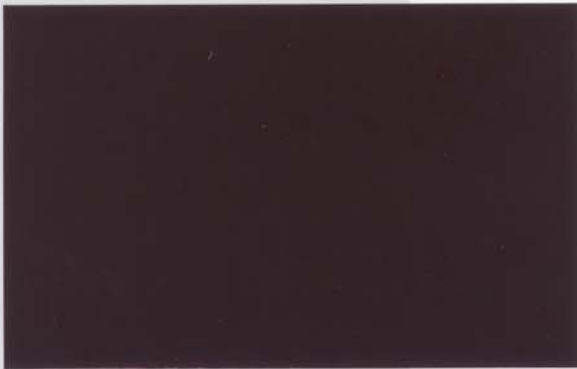
**No. 94 True Blue**



**No. 85 Satin Grey**



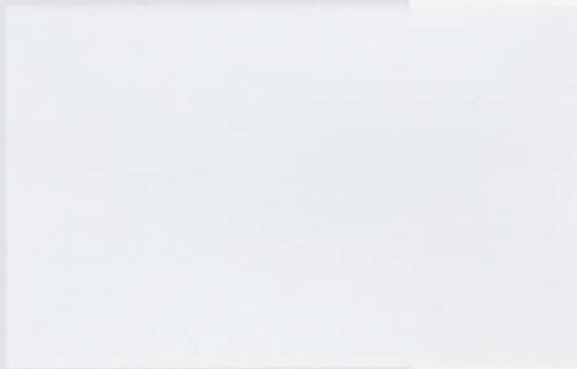
**No. 95 Stormy Blue**



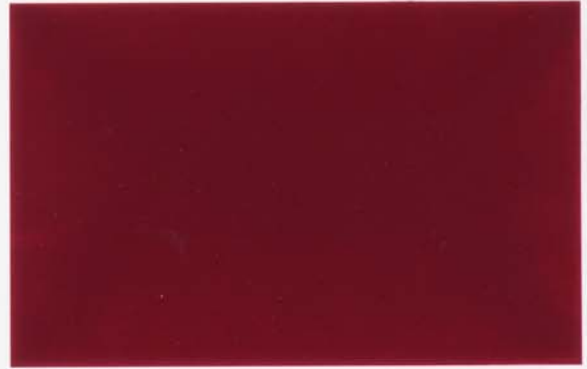
**No. 93 Chocolate**



**No. 87 Mountain Blue**



**No. 78 Snow White**



**No. 96 Wineberry**

\*Kewaunee's standard steel colors shown in this brochure were formulated to meet SEFA 8 standards. Actual colors on product may vary slightly from the colors shown on the color chart.

# Worksurface Colors

## OPTIONAL PAINT SELECTION



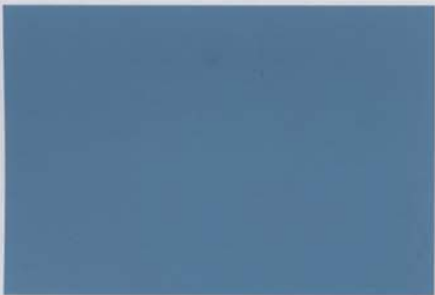
No. 261 Dove Grey



No. 358 Platinum



No. 242 Flint Grey



No. 238 Ice Blue

## STANDARD HIGH PRESSURE LAMINATE



Almond



Dove Grey



Light Neutral

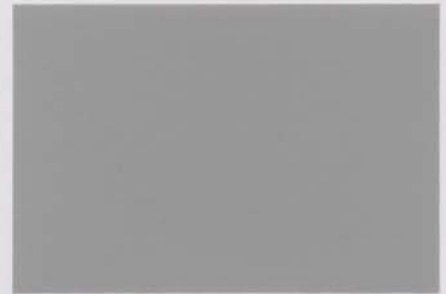


Black

## ESD HIGH PRESSURE LAMINATE



Almond-ESD



Gray-ESD

## ACCENT STRIPS FOR EVOLUTION PRODUCT LINES



Almond Dove Grey Light Neutral Black



Midori Brittany Blue Wineberry



P.O. Box 1842 • Statesville, NC 28687-1842  
Phone: (800) 824-6626 • Fax: (800) 624-5536  
E-mail: [marketing-tfg@kewaunee.com](mailto:marketing-tfg@kewaunee.com)  
Web Site: [www.kewaunee.com](http://www.kewaunee.com)